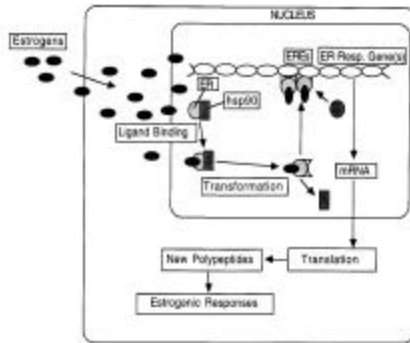


LUMI-CELL[®] ER

Endocrine Disruptors

High Through-Put Reporter Gene Assay



Molecular mechanism for estrogen hormone action

LUMI-CELL^â ER

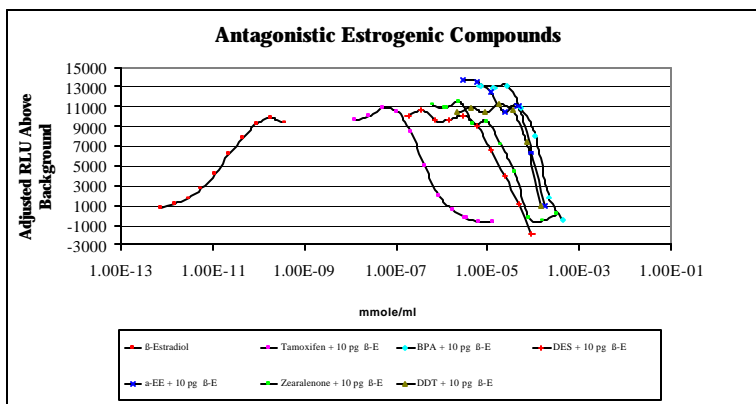
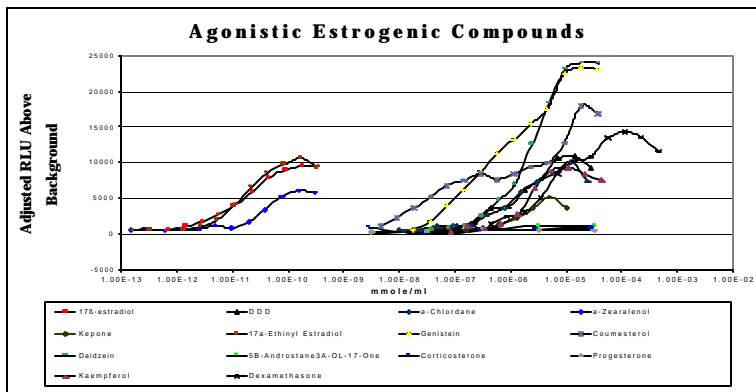
Stable Reporters for
Estrogen Receptors

➤ Rapid

➤ Reliable

➤ Reproducible

➤ Sensitive (< 1 ppt)



- Agonistic and Antagonistic Dose Response Curves
- Cost Effective
- In our lab or in yours
- Meets requirements mandated by the EPA and ICCVAM for ER transcriptional activation assays.



Xenobiotic Detection Systems, Inc.

1601 E. Geer Street, Suite S

Durham, NC 27704

Phone: (919) 688-4804

www.dioxins.com